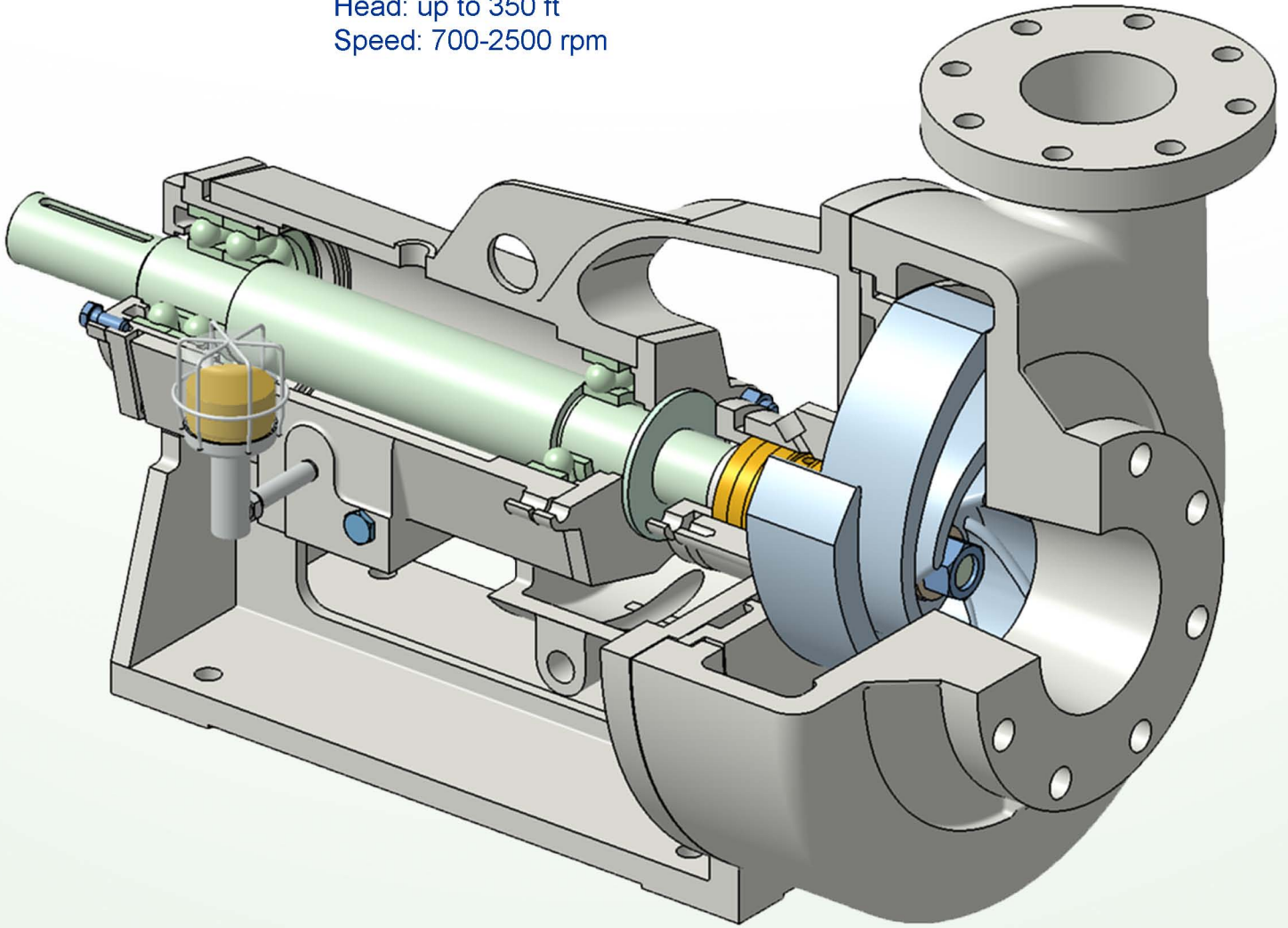




BERKEH PUMP

Open Impeller Centrifugal Pumps

Flange Size: 2" up to 10"
Capacity: up to 3500 GPM
Head: up to 350 ft
Speed: 700-2500 rpm





Pump Specification:

مشخصات پمپ:

Centrifugal Pumps-Open Impeller		پمپ های گریز از مرکز پروانه باز	
Flange Size:	2" up to 10"	اندازه فلنج:	۲ تا ۱۰ اینچ
Head:	Up to 350 ft	ارتفاع:	تا ۳۵۰ فوت
Capacity:	Up to 3500 GPM	آبدهی:	تا ۳۵۰۰ گالن در دقیقه
Nozzle:	Acc. To ANSI Standard	استاندارد فلنج:	ANSI
Sealing:	Mechanical Seal / Packing Ring	آب بندی:	مکانیکال سیل / نوار گرافیت
Lubrication:	Oil	روانکاری:	روغن
Pump Material:*	- Cast Iron - Ductile Iron - Bronze - Carbon Steel - Stainless Steel	جنس پمپ:*	- چدن خاکستری - چدن داکتیل - برنز - فولاد کربنی - فولاد ضد زنگ
Application:	- Drilling mud - Glass fibers - Sugar processing - Ash or coal - Lime slurries - Kaolin clay	کاربرد:	- گل حفاری - پشم شیشه - فرآورده های قندی - خاکستر یا زغال سنگ - لجن آهک - خاک رس

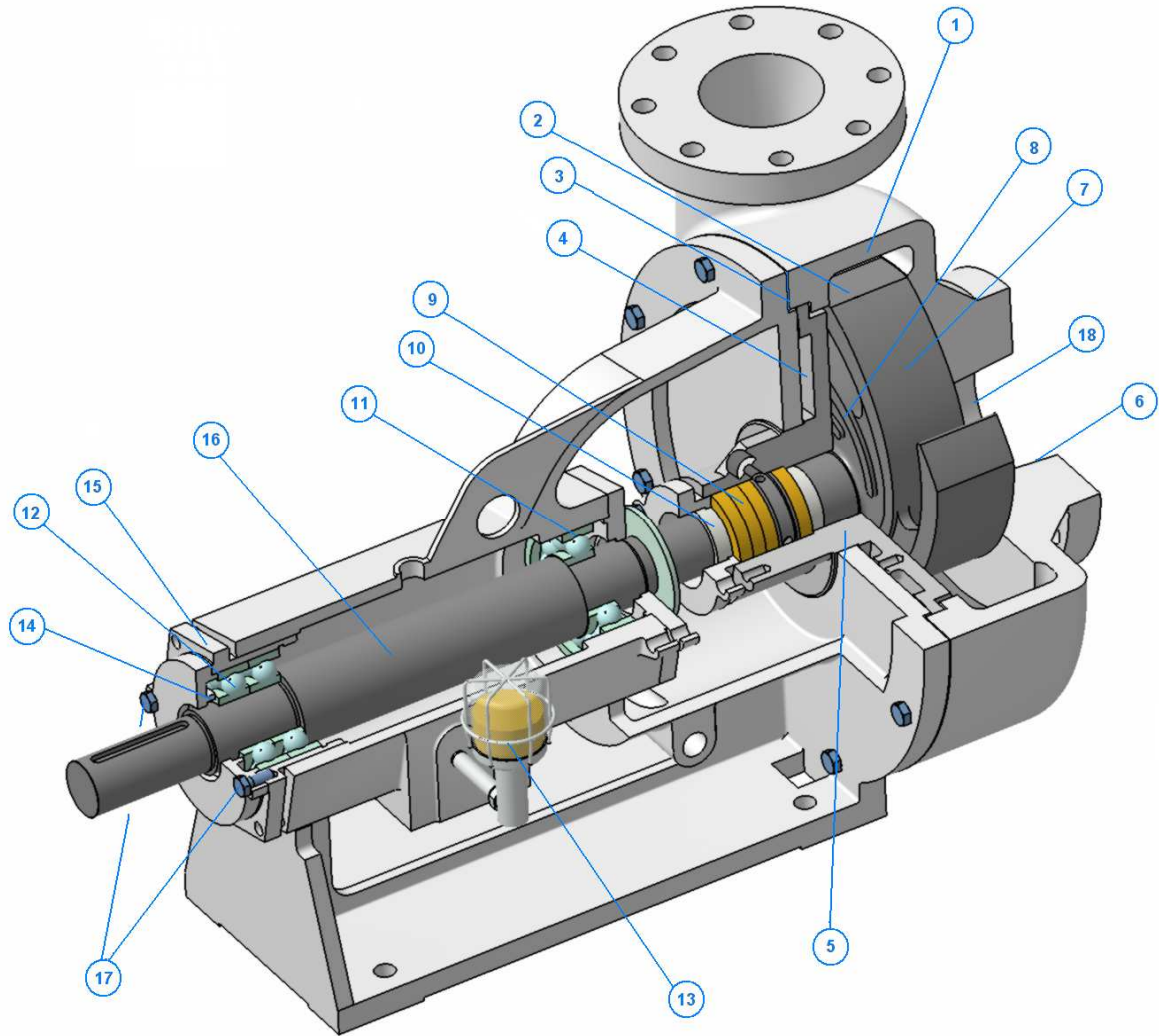
*Material is Changeable on request

*جنس قطعات برحسب درخواست متقاضی قابل تغییر است



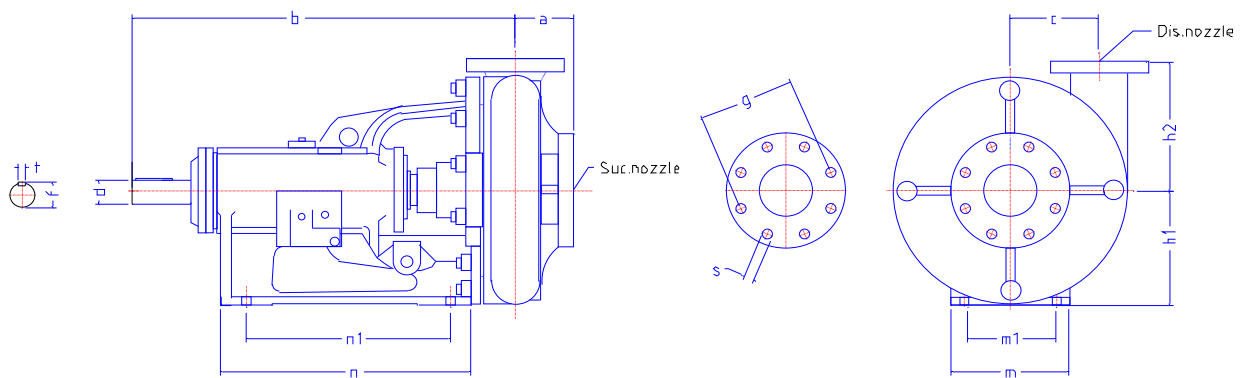
Feature

1. Thick, strong concentric casing provides higher efficiencies over a wider operating range than conventional volute designs. The concentric design minimizes turbulence and abrasive wear.
2. Wide open-vane impeller creates lower axial thrust for improved bearing life.
3. Casing gasket recessed for protection.
4. Replaceable stuffing-box cover.
5. Optional stuffing-boxes available for single and double mechanical seal applications and configured for flush liners.
6. Full pipe diameter entrance for minimum turbulence and maximum efficiency.
7. Smooth impeller eye for minimum turbulence and higher efficiency.
8. Back vanes reduce collection of solids at stuffing box and reduce box pressure.
9. Packing ring with a few leakage for cooling
- 9a. Long-life no-adjustment mechanical seal available for near zero leakage.
10. Replaceable shaft sleeve prevents shaft wear.
11. Deep groove ball bearings for increased bearing life.
- 11a. Roller Bearings can use for all models.
12. Duplex angular contact bearings eliminate shaft end play and increases bearing and seal life.
13. Oil lubrication for bearings for pump speeds in excess of 2400 rpm, upon request.
14. Frictionless" bearing isolators available to extend bearing life and improve pump efficiency.
15. Optional flanged bearing housing available for hydraulic drive.
16. Large supreme-duty shaft reduces deflection for longer life of packing and mechanical seals.
17. External adjustment of impeller clearance extends pump performance life.
18. Impeller anti-loosening device to eliminate pump damage in case of improper motor hook-up.





Installation Dimensions



Pump size	Suction Nozzle				Discharge Nozzle				a	b	c	d [*] mm	f [*] mm	h1	h2	m1	m	n1	n	t [*] mm
	Size	z	g	s	Size	z	g	s												
3x2x13	3	4	6	0.75	2	4	4 $\frac{3}{4}$	0.75	3 $\frac{1}{4}$	29 $\frac{1}{4}$	7	48	51.5	8 $\frac{5}{8}$	10 $\frac{1}{4}$	7	9	15 $\frac{7}{8}$	19 $\frac{7}{16}$	14
4 x3x13	4	8	7 $\frac{1}{2}$	0.75	3	4	6	0.75	4 $\frac{1}{4}$	29 $\frac{3}{8}$	6 $\frac{3}{8}$	48	51.5	8 $\frac{5}{8}$	10 $\frac{1}{4}$	7	9	15 $\frac{7}{8}$	19 $\frac{7}{16}$	14
5x4 x14	5	8	8 $\frac{1}{2}$	0.888	4	8	7 $\frac{1}{2}$	0.75	5	30	6 $\frac{1}{8}$	48	51.5	9 $\frac{1}{2}$	11	7	9	15 $\frac{7}{8}$	19 $\frac{7}{16}$	14
6x5x11	6	8	9 $\frac{1}{2}$	0.888	5	8	8 $\frac{1}{2}$	0.888	5 $\frac{3}{4}$	30 $\frac{3}{8}$	6	48	51.5	8 $\frac{5}{8}$	11	7	9	15 $\frac{7}{8}$	19 $\frac{7}{16}$	14
6x5x14	6	8	9 $\frac{1}{2}$	0.888	5	8	8 $\frac{1}{2}$	0.888	5 $\frac{1}{2}$	30 $\frac{3}{8}$	6	48	51.5	10 $\frac{1}{2}$	11	7	9	15 $\frac{7}{8}$	19 $\frac{7}{16}$	14
8x6x11	8	8	11 $\frac{3}{4}$	0.888	6	8	9 $\frac{1}{2}$	0.888	6 $\frac{1}{4}$	31 $\frac{1}{4}$	8 $\frac{3}{8}$	48	51.5	10	14	7	9	15 $\frac{7}{8}$	19 $\frac{7}{16}$	14
8x6x14	8	8	11 $\frac{3}{4}$	0.888	6	8	9 $\frac{1}{2}$	0.888	6 $\frac{1}{4}$	31 $\frac{1}{4}$	8 $\frac{3}{8}$	48	51.5	11 $\frac{13}{16}$	14	7	9	15 $\frac{7}{8}$	19 $\frac{7}{16}$	14
10x8x14	10	12	14 $\frac{1}{4}$	1.00	8	8	11 $\frac{3}{4}$	0.888	6 $\frac{11}{16}$	31 $\frac{1}{4}$	8	48	51.5	11 $\frac{3}{8}$	14 $\frac{1}{16}$	7	9	15 $\frac{7}{8}$	19 $\frac{7}{16}$	14

All dimensions are in inches, unless marked with (*) are in mm



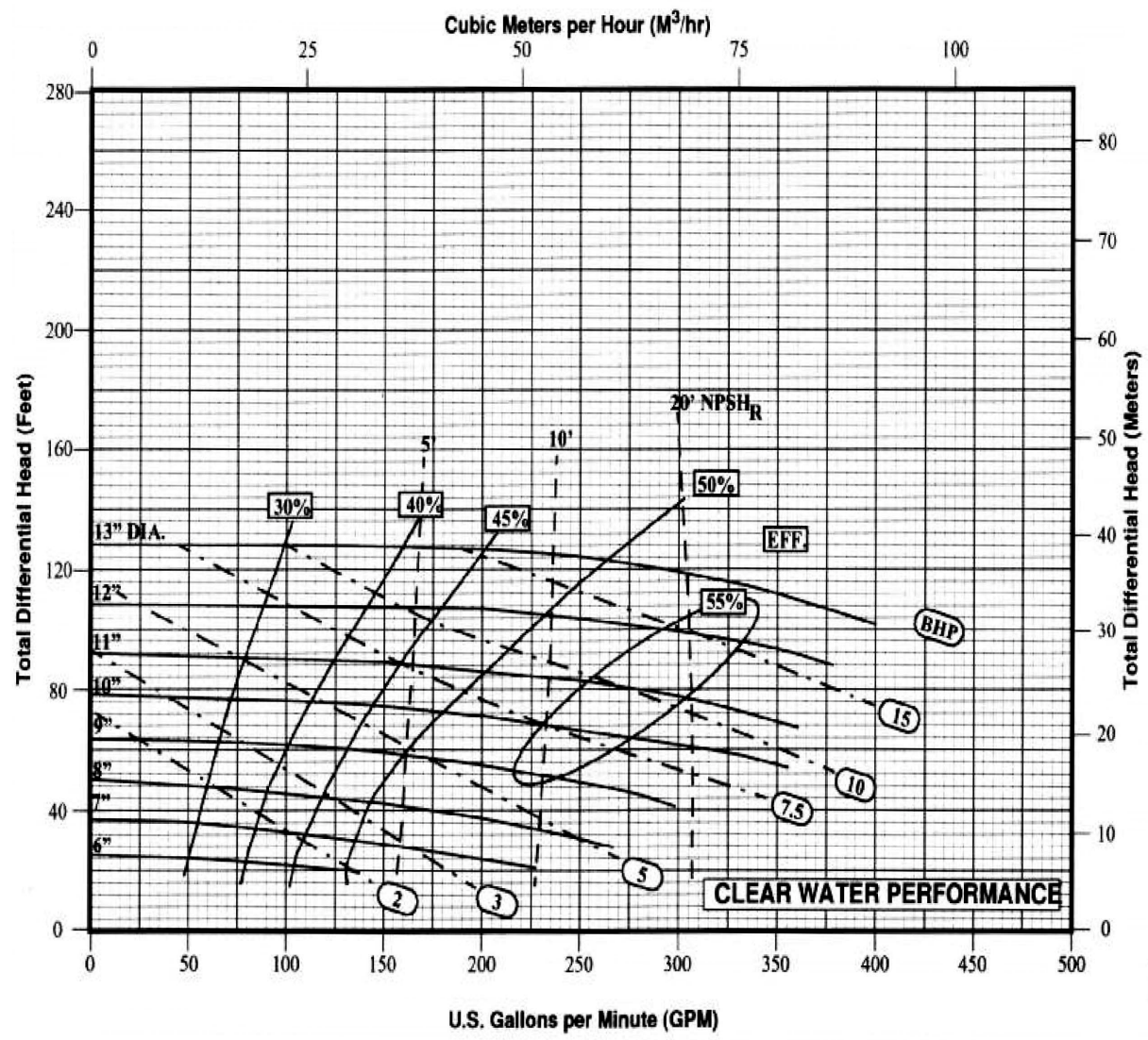
Pump Type: 3x2x13

Speed: 700-2500 rpm



Type: 3x2x13

1450 rpm





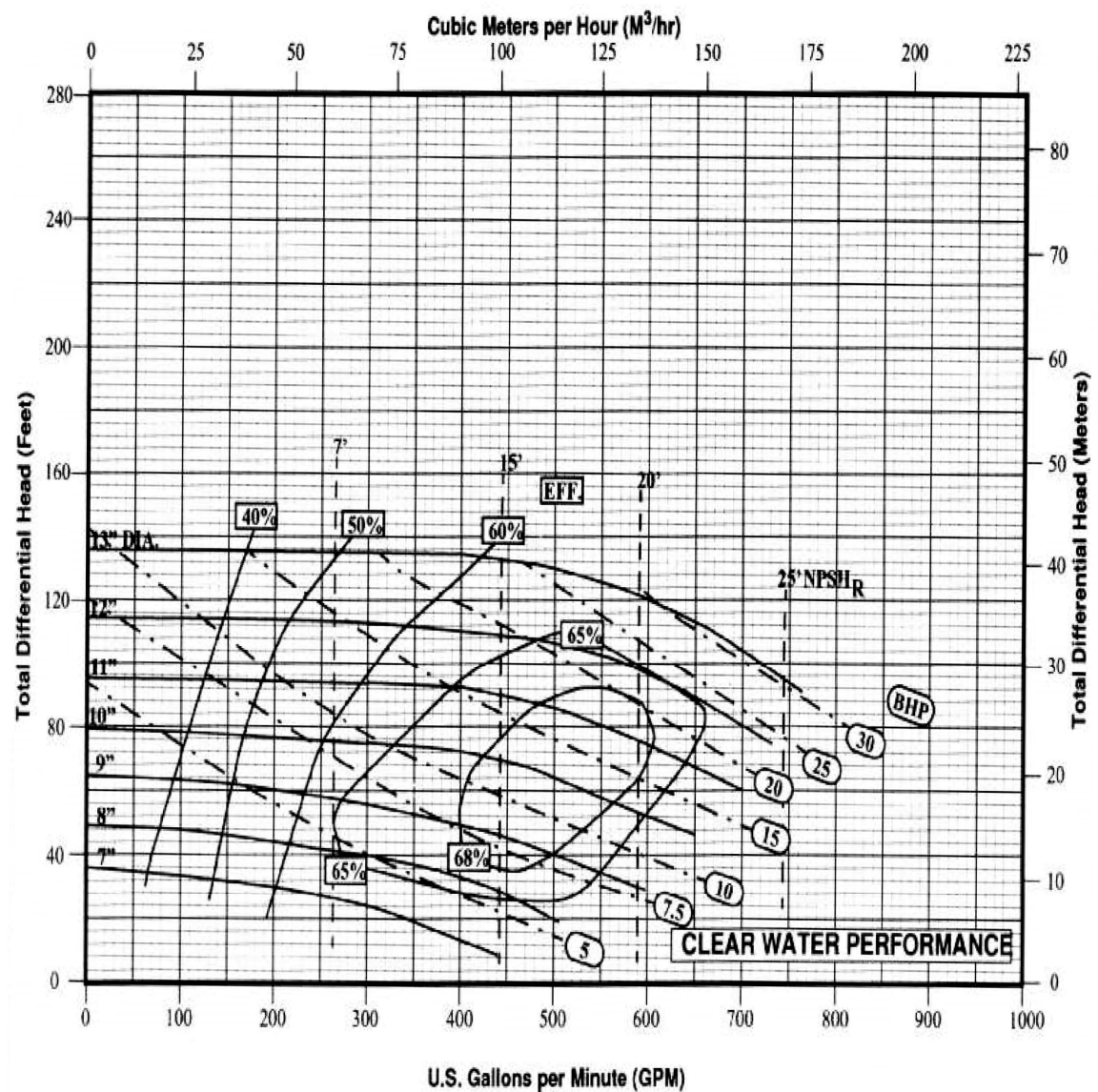
Pump Type: 4x3x13

Speed: 1000-2400 rpm



Type: 4x3x13

1450 rpm





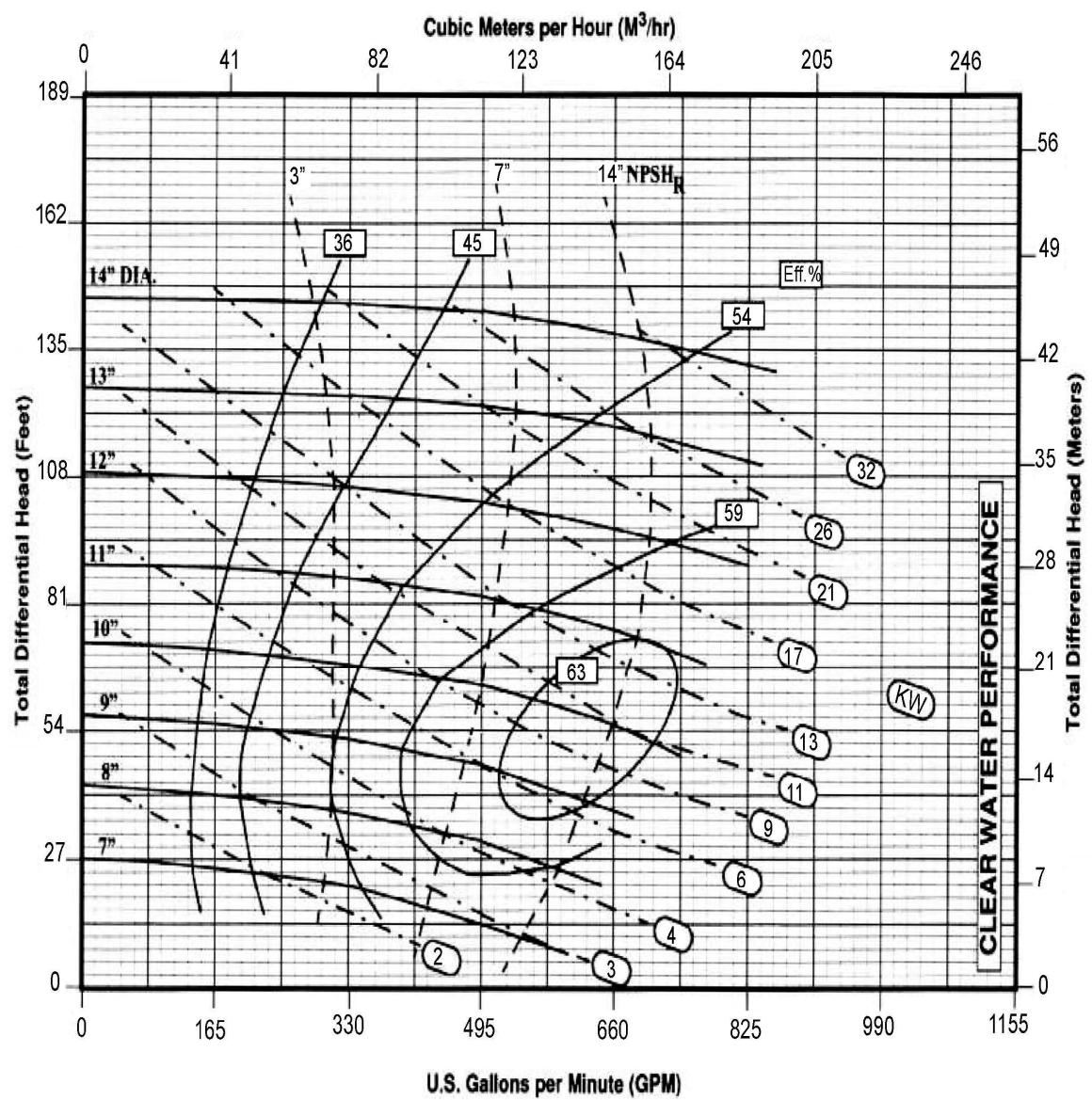
Pump Type: 5x4x14

Speed: 800-2100 rpm



Type: 5x4x14

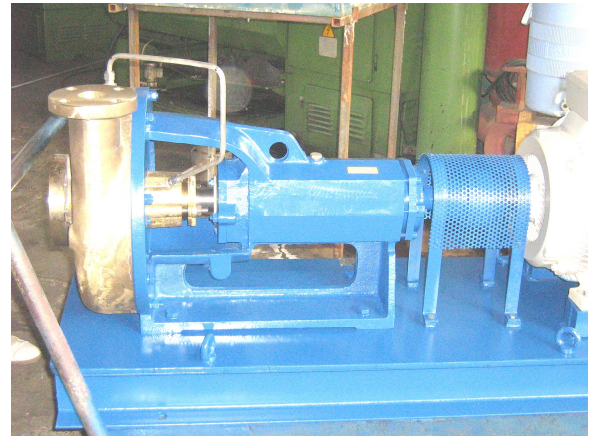
1450 rpm





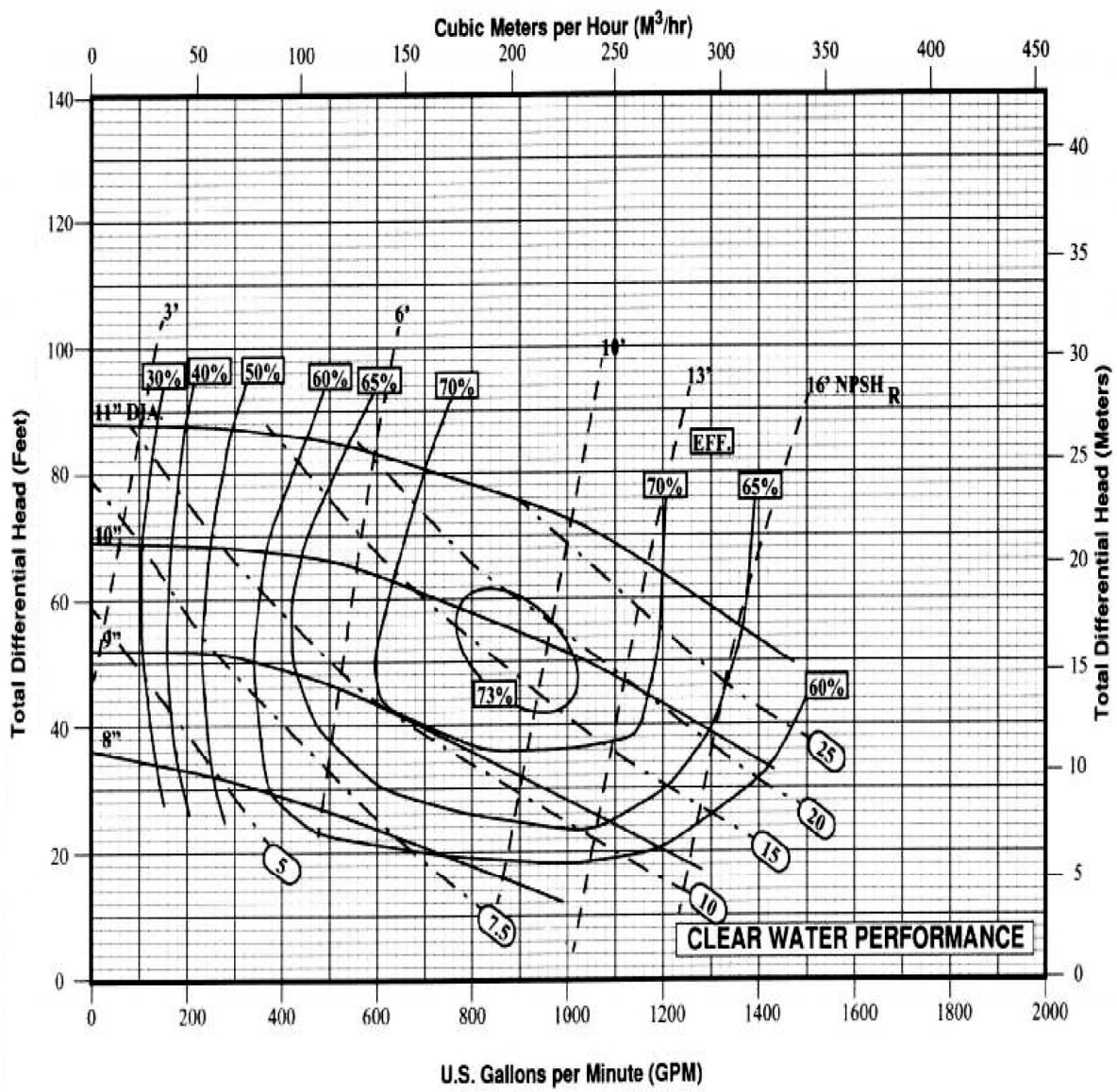
Pump Type: 6x5x11

Speed: 800-1900 rpm



Type: 6x5x11

1450 rpm





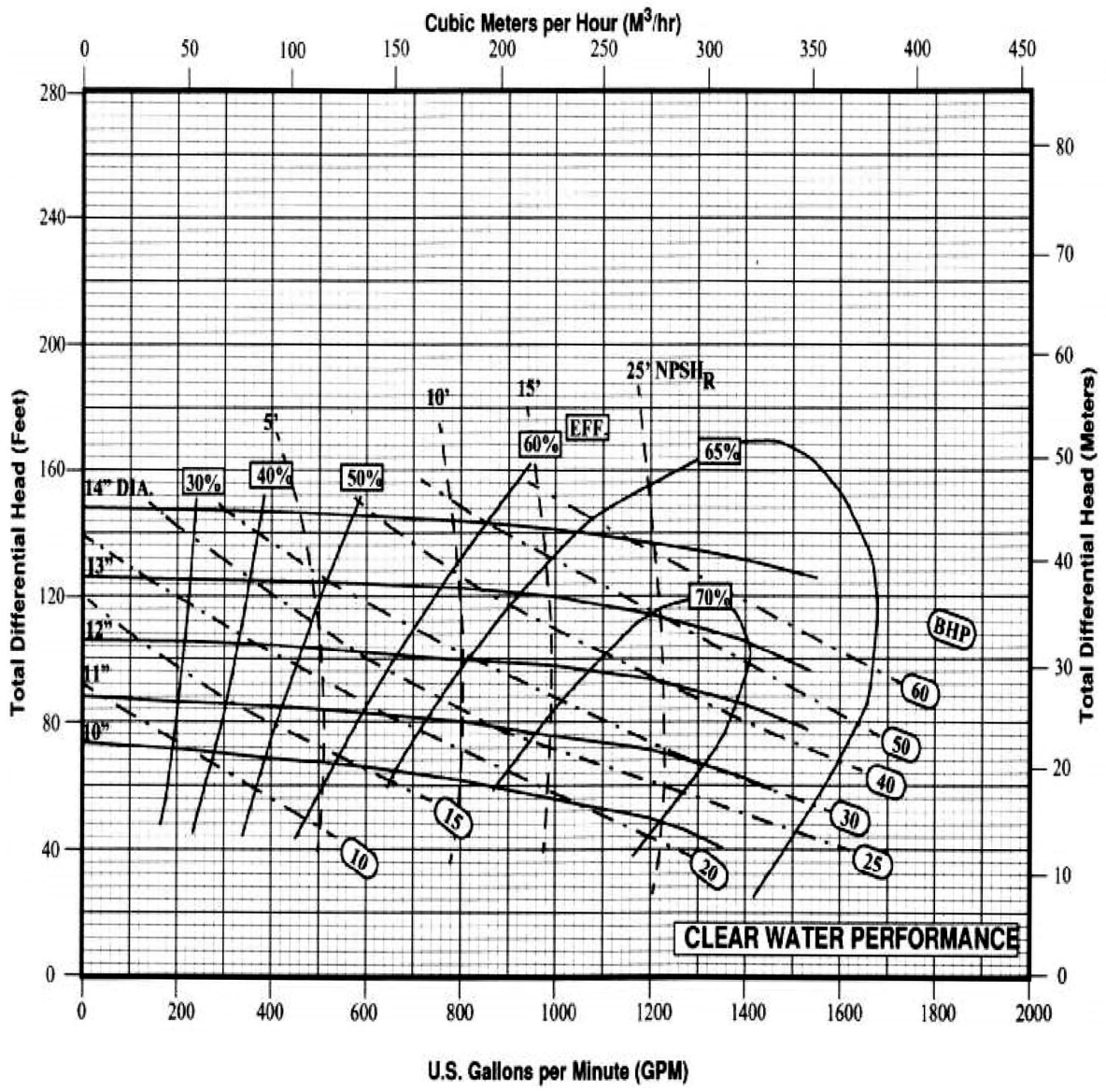
Pump Type: 6x5x14

Speed: 800-1800 rpm



Type: 6x5x14

1450 rpm





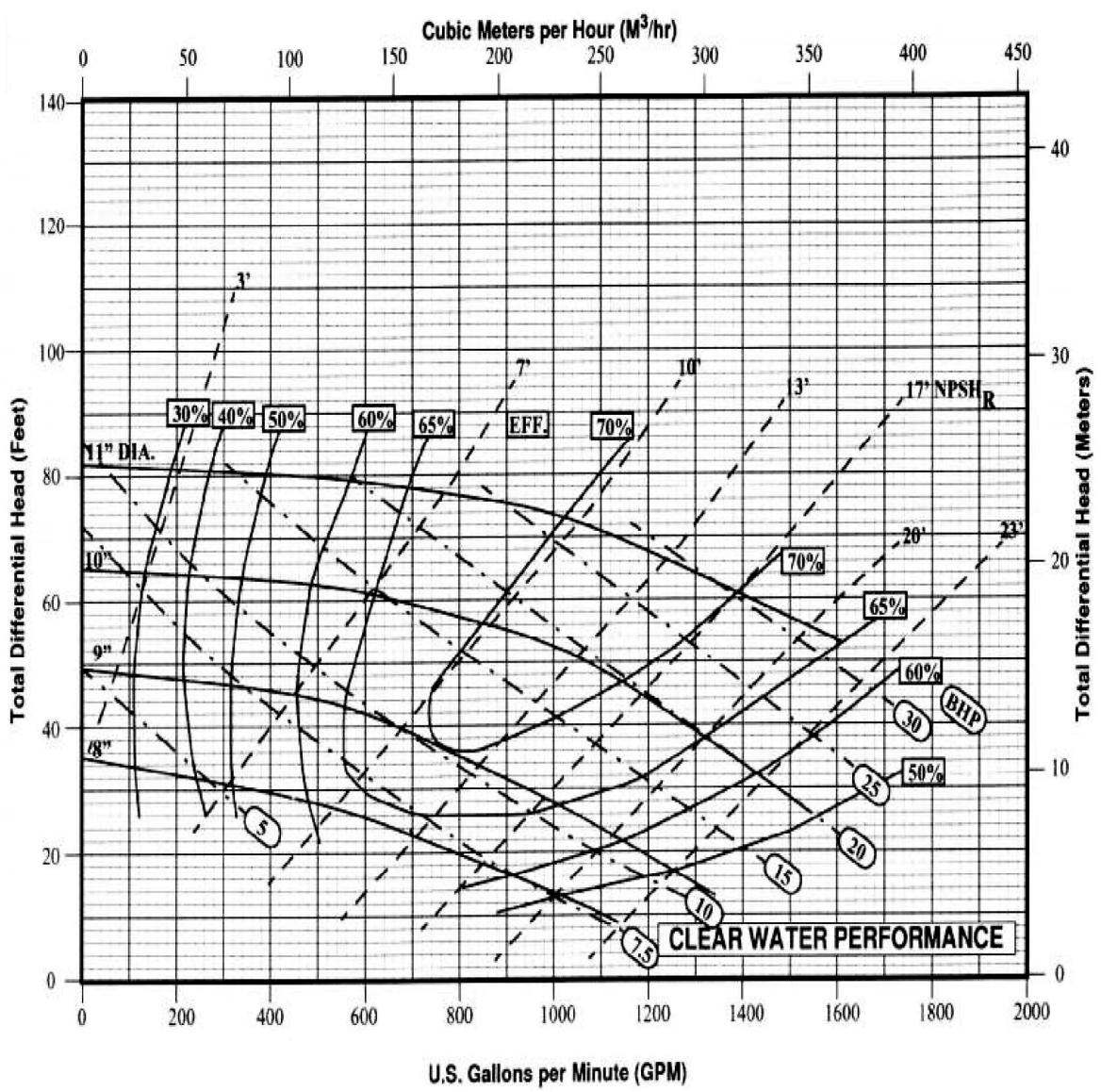
Pump Type: 8x6x11

Speed: 800-1800 rpm



Type: 8x6x11

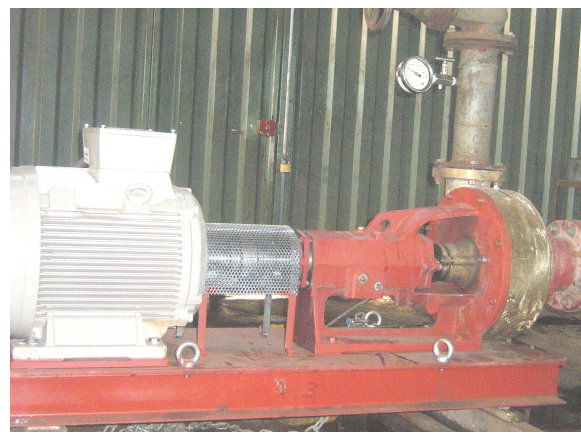
1450 rpm





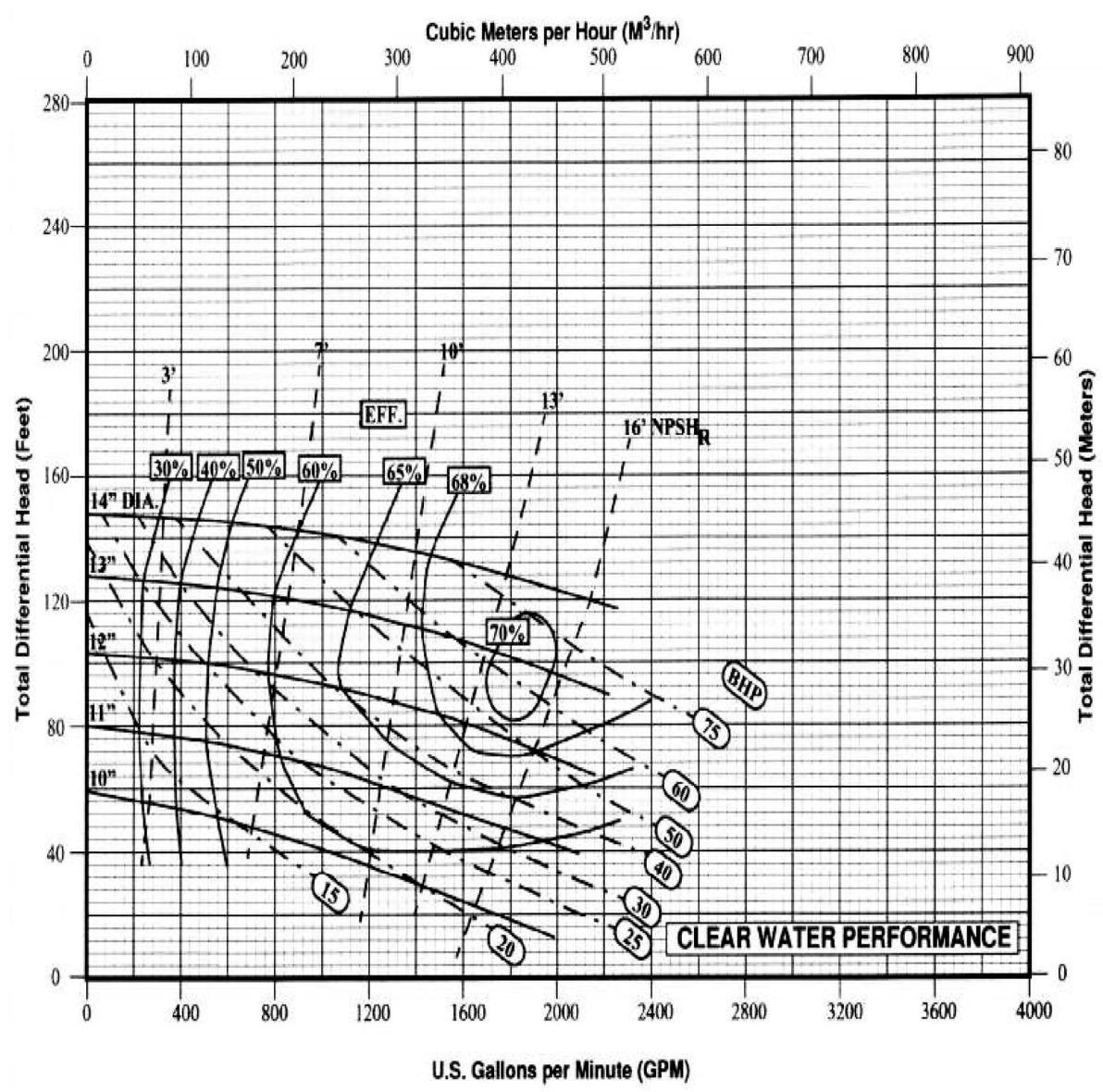
Pump Type: 8x6x14

Speed: 800-1700 rpm



Type: 8x6x14

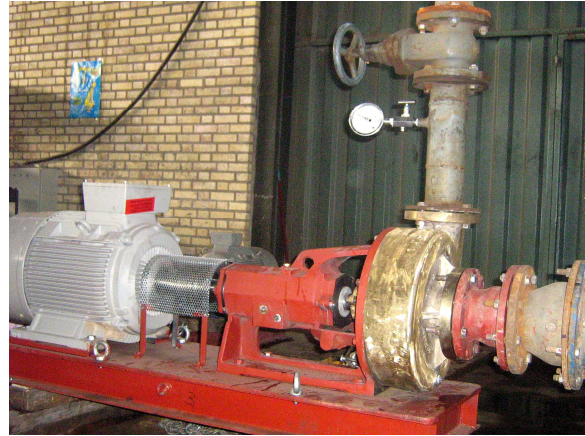
1450 rpm





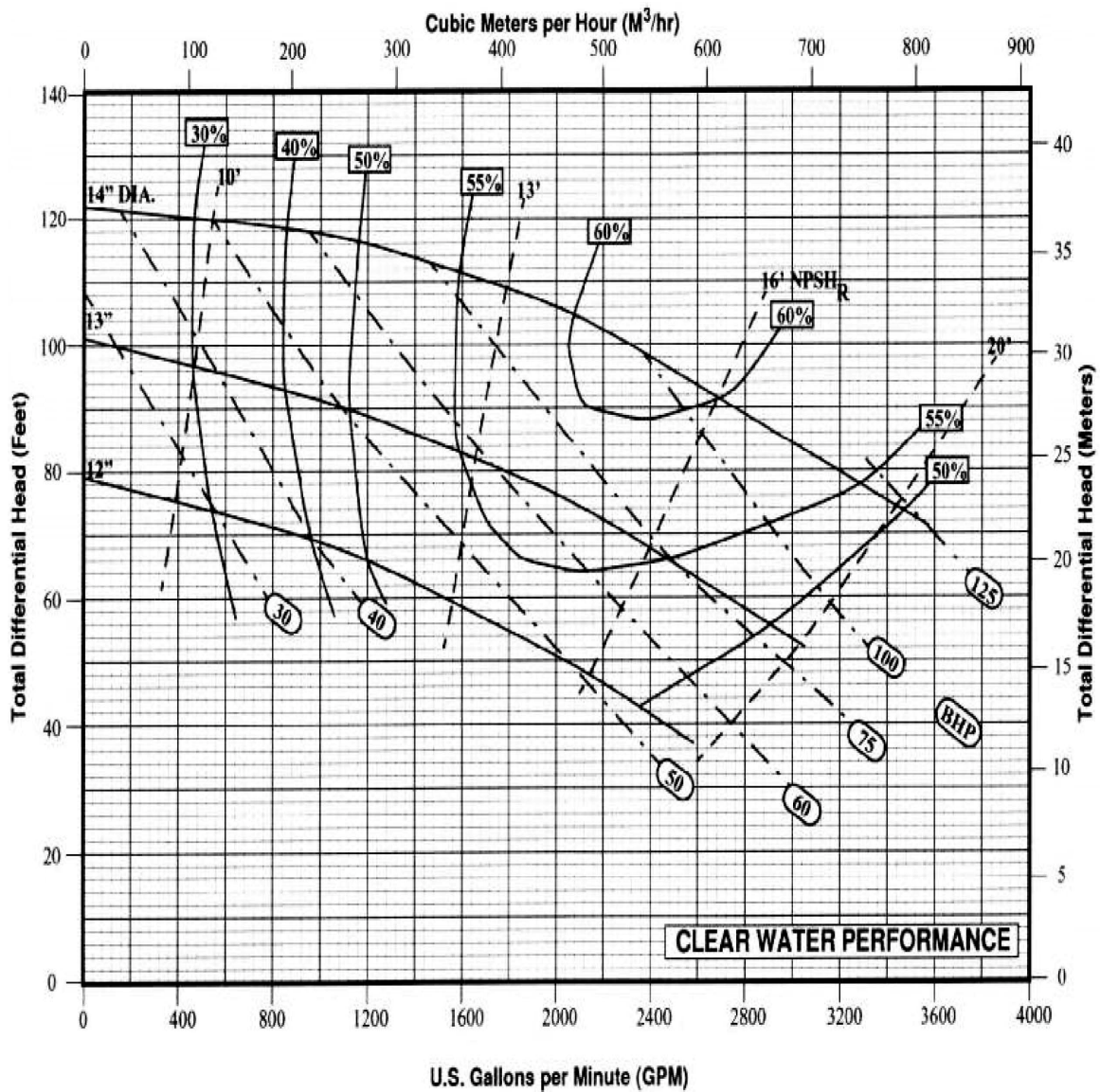
Pump Type: 10x8x14

Speed: 800-1800 rpm



Type: 10x8x14

1450 rpm





Note:

A series of horizontal dotted lines provided for writing notes.