



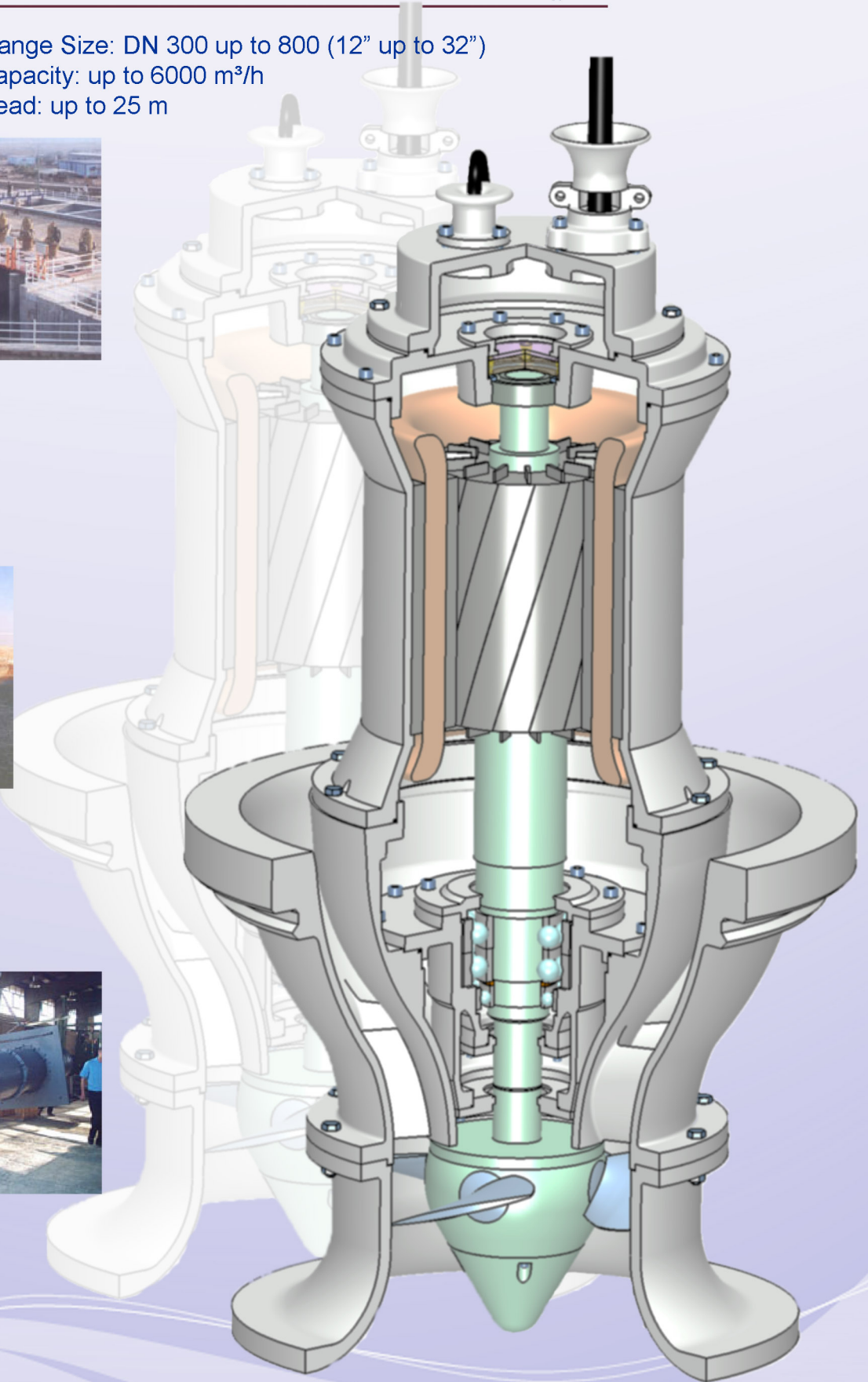
BERKEH PUMP

Submersible Axial /Mixed Flow Pumps Vertical Shaft Axial/Mixed Flow Pumps

Flange Size: DN 300 up to 800 (12" up to 32")

Capacity: up to 6000 m³/h

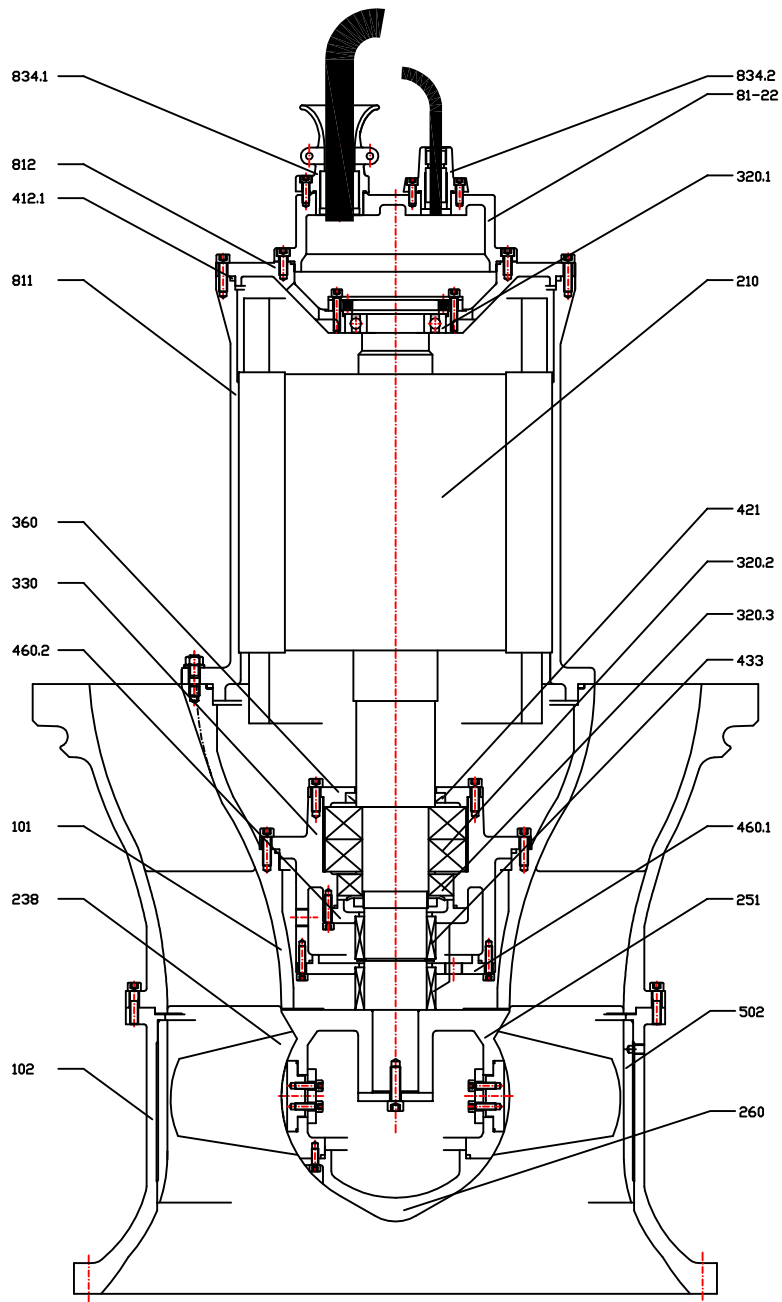
Head: up to 25 m





BERKEH

Submersible Axial Flow Pump



Part no.	Part des.	Part no.	Part des.
101	Diffuser	430-1	Mechanical Seal seat (Water)
102	bellmouth	430-2	Mechanical Seal seat (oil)
210	Rotor	460.1,2	Seal cover
238	Blade	502	Wear ring
251	Impeller hub	811	Motor casing
260	Hub cover	812	Motor cover
320.1,2,3	Bearing	834.1	Cable gland
330	Bearing housing	834.2	Terminal cover
360	Bearing cover		
412	O-ring		
421	Oil seal		



Pump Specification:

مشخصات پمپ:

BSA, BSM – Submersible Axial / Mixed Flow Pumps

الکتروپمپهای مستغرق جریان محوری / مختلط

BSV – Vertical Shaft Axial / Mixed Flow Pumps

الکتروپمپهای محور بلند جریان محوری / مختلط

(Type VS3 acc. to API Standard)

Flange Size:	300 up to 800 (12" up to 32")	۳۰۰ تا ۸۰۰ میلیمتر (۱۲ تا ۳۲ اینچ)	اندازه فلنج:
Head:	Up to 25 m	تا ۲۵ متر	ارتفاع:
Capacity:	Up to 6000 m ³ /h	تا ۶۰۰۰ مترمکعب در ساعت	آبدهی:
Nozzle:	Acc. To DIN Standard	DIN	استاندارد فلنج:
Sealing:	Mechanical Seal	مکانیکال سیل	آب بندی:
Pump Material:*	- Cast Iron - Ductile Iron - Bronze - Carbon Steel - Stainless Steel	- چدن خاکستری - چدن داکتیل - برنز - فولاد کربنی - فولاد ضد زنگ	جنس پمپ:*

*Material is Changeable on request

*جنس قطعات برحسب درخواست متقاضی قابل تغییر است





Submersible Axial Flow Pump



Installation Dimensions:

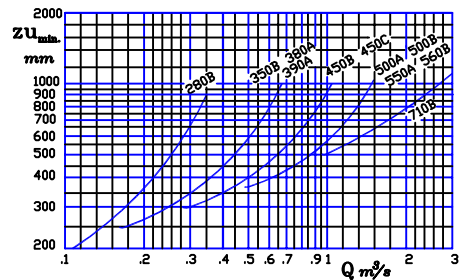
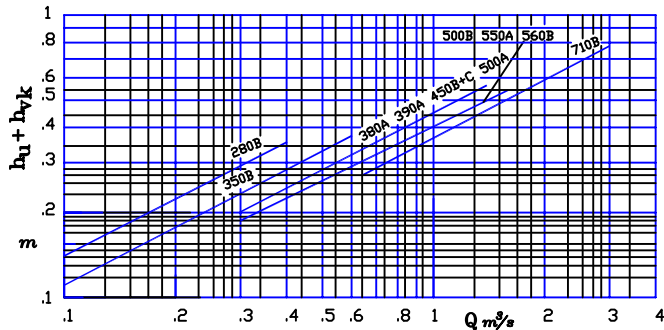
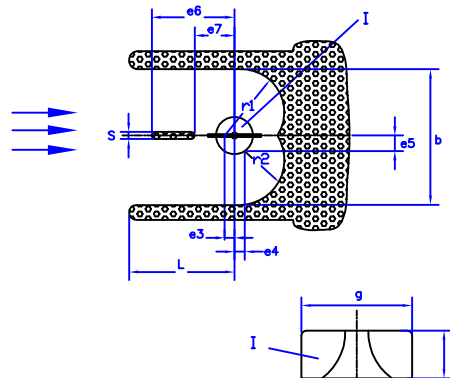
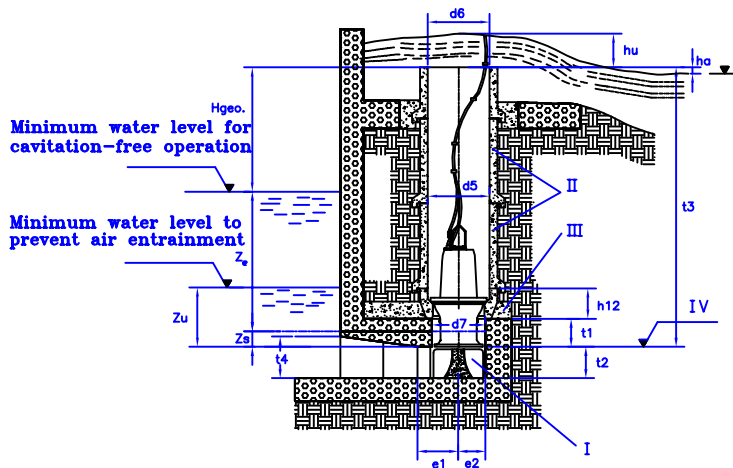
Type A

$$H = H_{geo} + H_{vsystem}$$

$$H = h_u + h_a + h_{vR} + h_{vk}$$

$$Z_e > NPSH-10$$

- I - Inlet cone
- II - Concrete socket and spigot pipes
- III - Concrete supporting ring
- IV - Reference level for all structural dimensions
- t3 - Dependent on system conditions



Pump Sizes	b	d5	d6	d7	e1	e2	e3	e4	e5	e6	e7	h12	lmin	r1	r2	smax	t1	t2	t4	zs	g	y
280B	750	600	≥ d5	560	375	240	75	56	112	560	225	320	750	375	203	35	259	200	280	115	450	180
350B	1000	700		610	500	315	100	75	149	725	300	320	1000	500	270	40	324	260	375	120	550	240
380A	1000	800		760	500	335	100	75	149	725	300	320	1000	500	270	40	371	260	375	170	550	240
390A	1000	800		760	500	335	100	75	149	725	300	320	1000	500	270	40	424	260	375	170	550	240
450B	1250	800		760	625	390	125	94	186	900	375	320	1250	625	338	50	434	320	470	220	700	290
450C	1250	800		760	625	390	125	94	186	900	375	320	1250	625	338	50	434	320	470	220	700	290
500A	1500	800		760	750	470	150	113	223	1100	450	320	1500	750	405	50	361	380	570	190	850	350
500B	1500	900		870	750	470	150	113	223	1100	450	380	1500	750	405	50	439	380	570	220	850	350
550A	1500	900		870	750	470	150	113	223	1100	450	380	1500	750	405	50	499	380	570	270	850	350
560B	1500	900		870	750	470	150	113	223	1100	450	380	1500	750	405	50	401	380	570	270	850	350
710B	2000	1000		970	1000	620	200	150	298	1450	600	430	2000	1000	540	60	400	500	750	270	1100	470

All dimensions in mm

*-Head loss in well casing h_{vR} is disregarded, as the velocity in the casing is relatively small



Submersible Axial Flow Pump



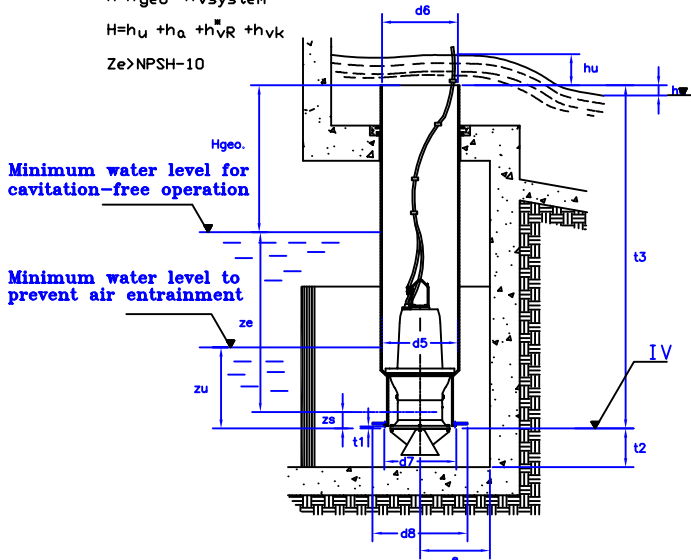
Installation Dimensions:

Type B

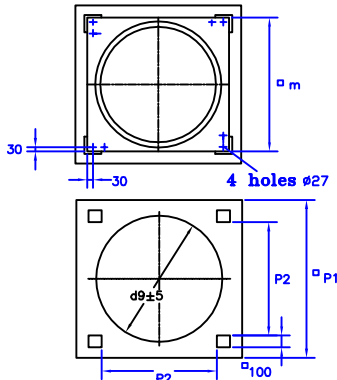
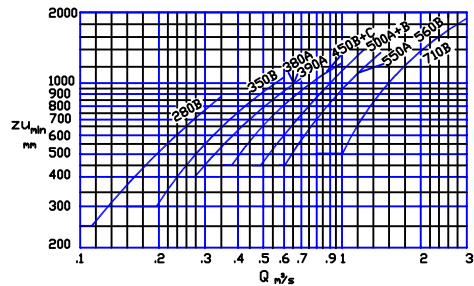
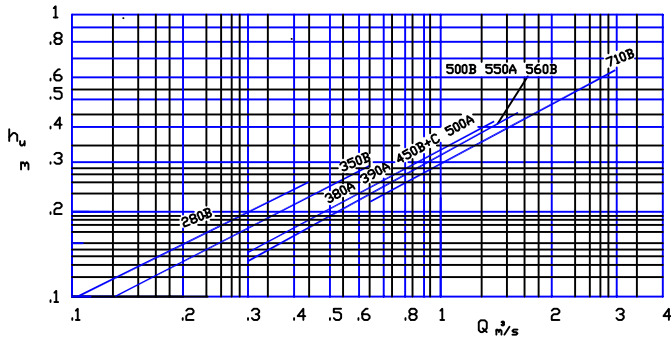
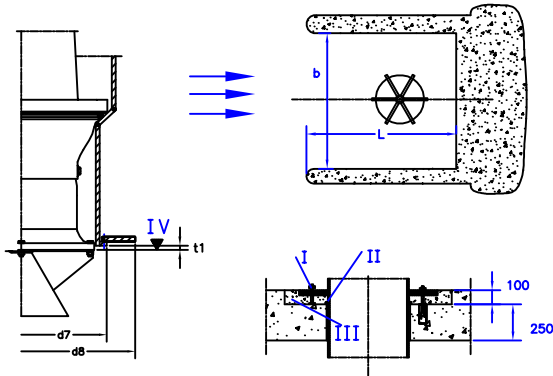
$$H = H_{geo} + H_{vsystem}$$

$$H = h_u + h_a + h_{vR} + h_{vk}$$

$$Z_e > NPSH - 10$$



- I - Inlet cone
- II - Concrete socket and spigot pipes
- III - Concrete support ring
- IV - Reference level for all structural dimensions
- t3 - Dependent on system conditions



Pump Sizes	b	d5	d6	d7	d8	e	l _{min}	m	P1	P2	t1	t2	Z _s
280B	750	600	≥ d5	500	650	370	1100	700	850	540	10	200	115
350B	1000	650		650	800	500	1500	750	900	590	10	260	120
380A	1000	800		800	900	500	1500	900	1050	740	10	260	170
390A	1000	800		800	900	500	1500	900	1050	740	10	260	170
450B	1250	800		800	1050	620	1900	900	1050	740	10	320	220
450C	1250	800		800	1050	620	1900	900	1050	740	10	320	220
500A	1500	800		800	1150	750	2250	900	1050	740	10	380	190
500B	1500	900		900	1150	750	2250	1050	1250	890	10	380	220
550A	1500	900		900	1300	750	2250	1050	1250	890	10	380	270
560B	1500	900		900	1300	750	2250	1050	1250	890	10	380	270
710B	2000	1000		1000	1600	1000	3000	1150	1350	990	10	500	270

All dimensions in mm

*-Head loss in well casing h_{vR} is disregarded, as the velocity in the casing is relatively small

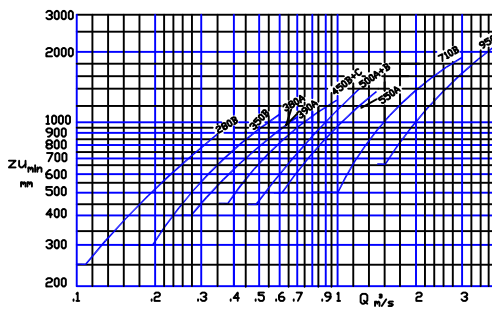
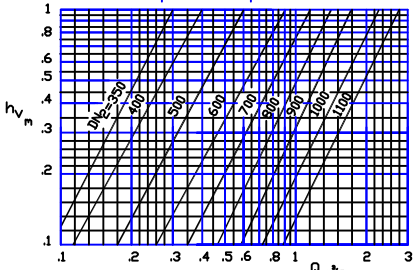
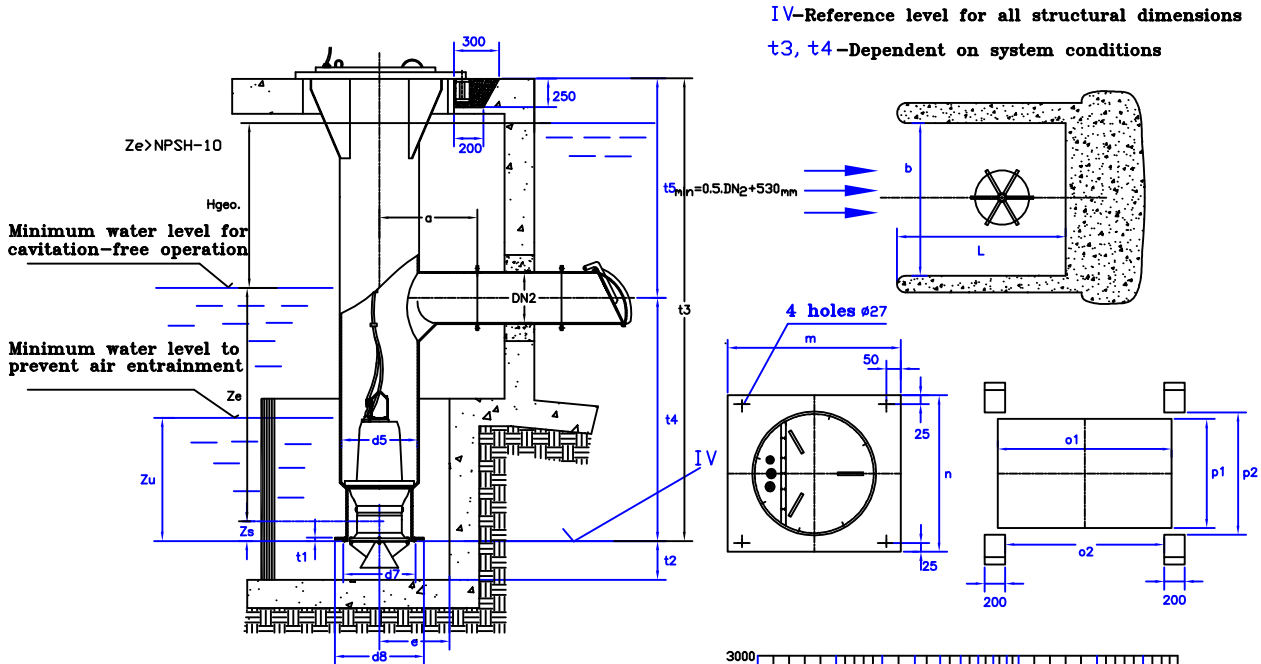


Submersible Axial Flow Pump



Installation Dimensions:

Type C



Pump Sizes	DN _z from	DN _z to	a	b	d5	d7	d8	e	l _{min}	m	n	o1	o2	p1	p2	t1	t2	z _s
280B	350	500	450	750	600	500	650	370	1100	950	1050	900	650	750	850	10	200	115
350B	400	500	475	1000	650	650	800	500	1500	950	1050	900	650	750	850	10	260	120
380A	500	600	600	1000	800	800	900	500	1500	1150	1200	1100	850	900	1000	10	260	170
390A	500	600	600	1000	800	800	900	500	1500	1150	1200	1100	850	900	1000	10	260	170
450B	600	-	600	1250	800	800	1050	620	1900	1150	1200	1100	850	900	1000	10	320	220
450C	600	-	600	1250	800	800	1050	620	1900	1150	1200	1100	850	900	1000	10	320	220
500A	600	-	600	1500	800	800	1150	750	2250	1150	1200	1100	850	900	1000	10	380	190
500B	600	700	650	1500	900	900	1150	750	2250	1250	1300	1200	950	1000	1100	10	380	220
550A	700	-	650	1500	900	900	1300	750	2250	1250	1300	1200	950	1000	1100	10	380	270
580B	700	-	650	1500	900	900	1300	750	2250	1250	1300	1200	950	1000	1100	10	380	270
710B	900	-	700	2000	1000	1000	1600	1000	3000	1350	1500	1300	1050	1200	1300	10	500	270
950	1000	1300	960	2800	1320	1320	2250	1400	3000	1860	2100	1710	1460	1600	1700	10	680	400

All dimensions in mm

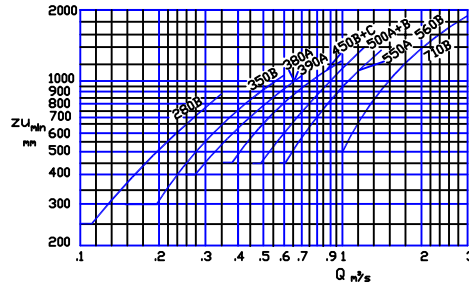
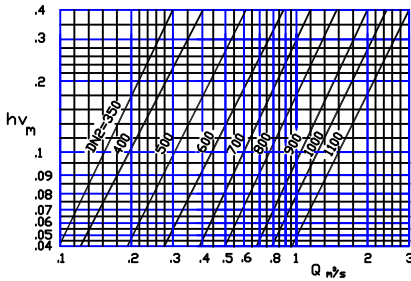
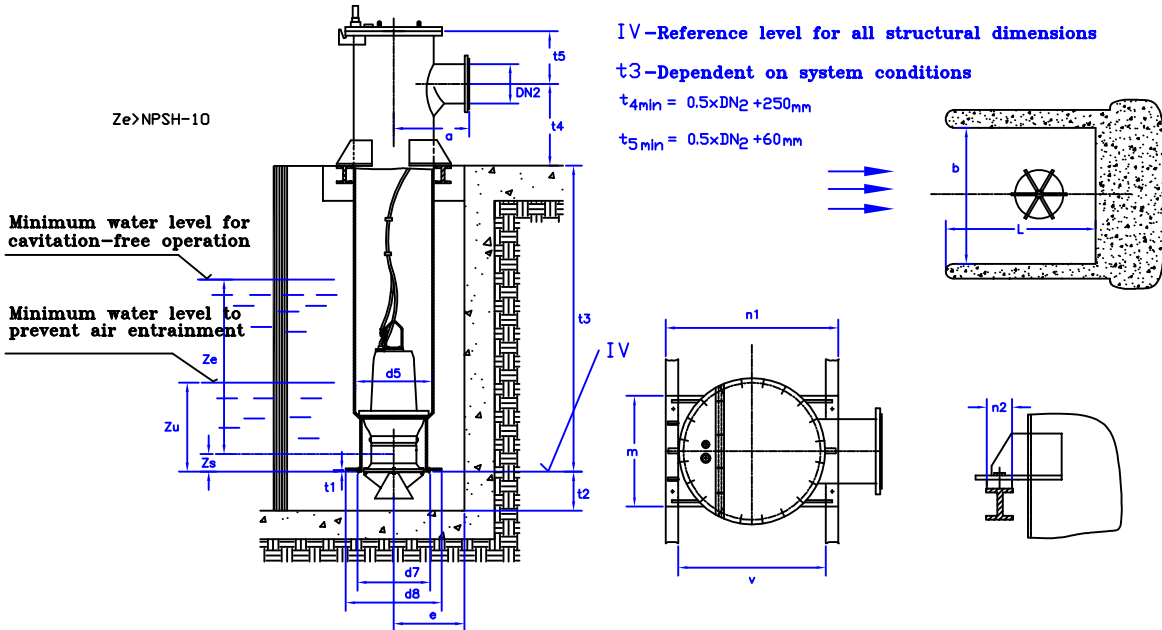


Submersible Axial Flow Pump



Installation Dimensions:

Type D



Pump Sizes	DN ₂		a	b	d5	d7	d8	e	l _{min}	m	n1	n2	v _{min}	t1	t2	z _s
	from	to														
280B	350	600	450	750	600	500	650	370	1100	580	900	80	700	10	200	115
350B	400	600	475	1000	650	650	800	500	1500	620	950	80	750	10	260	120
380A	500	800	600	1000	800	800	900	500	1500	750	1150	100	900	10	260	170
390A	500	800	600	1000	800	800	900	500	1500	750	1150	100	900	10	260	170
450B	600	800	600	1250	800	800	1050	620	1900	750	1150	100	900	10	320	220
450C	600	800	600	1250	800	800	1050	620	1900	750	1150	100	900	10	320	220
500A	600	800	600	1500	800	800	1150	750	2250	750	1150	100	900	10	380	190
500B	600	900	650	1500	900	900	1150	750	2250	850	1280	130	1000	10	380	220
550A	700	900	650	1500	900	900	1300	750	2250	850	1280	130	1000	10	380	270
560B	700	900	650	1500	900	900	1300	750	2250	850	1280	130	1000	10	380	270
710B	900	1100	700	2000	1000	1000	1600	1000	3000	950	1450	130	1150	10	500	270

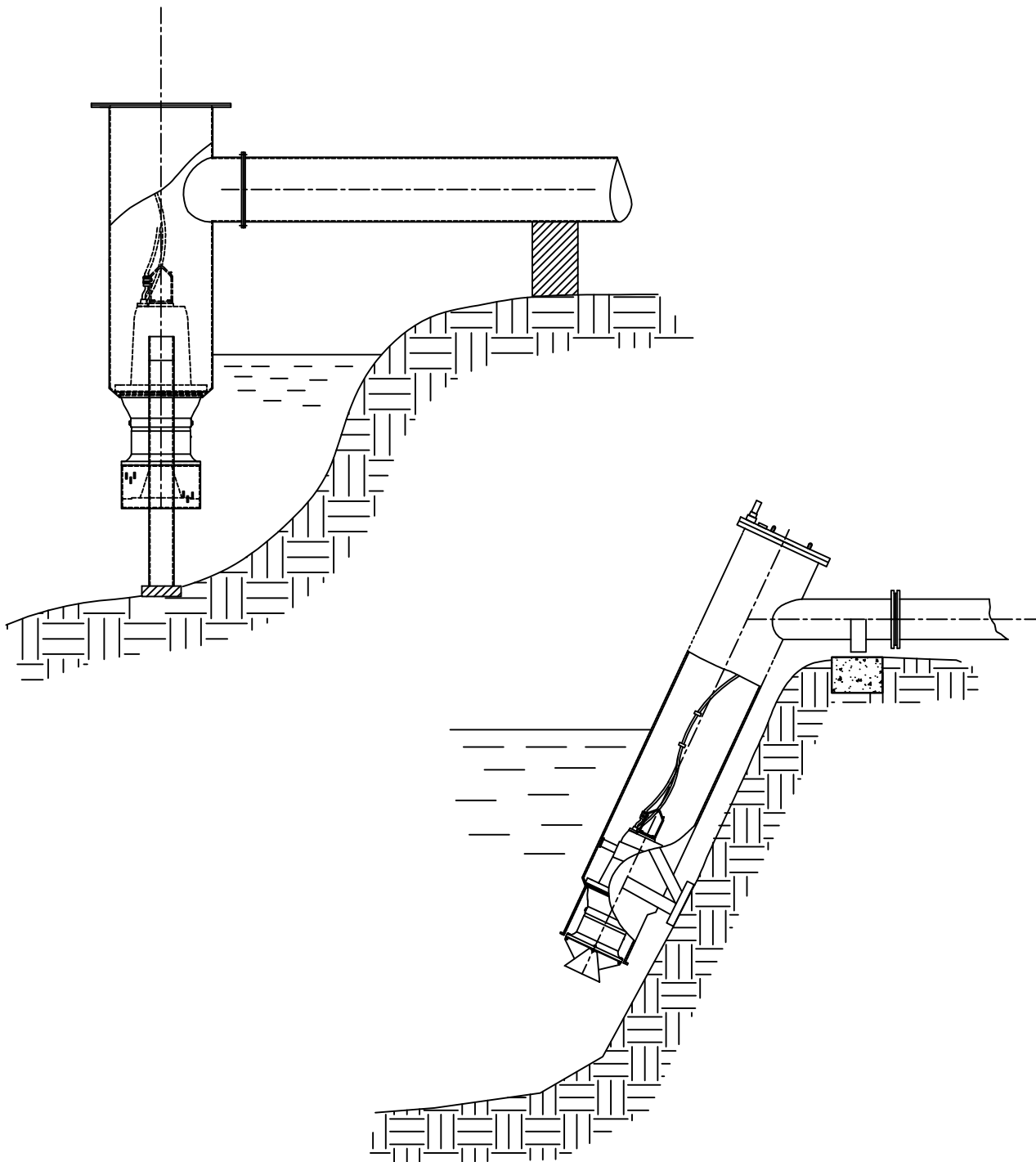
All dimensions in mm



Submersible Axial Flow Pump



Other types of installation:

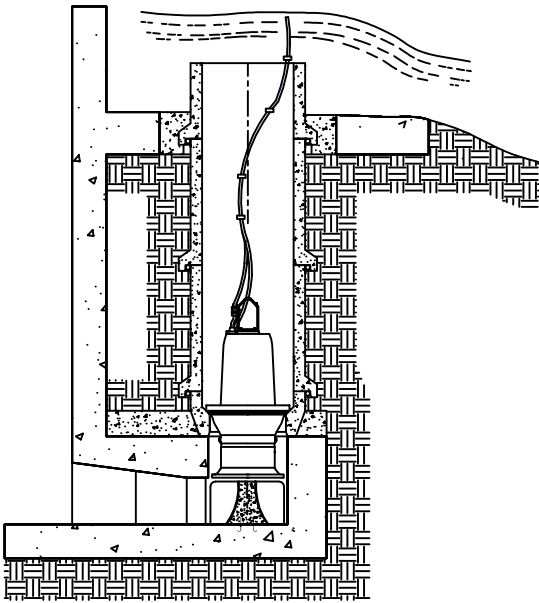




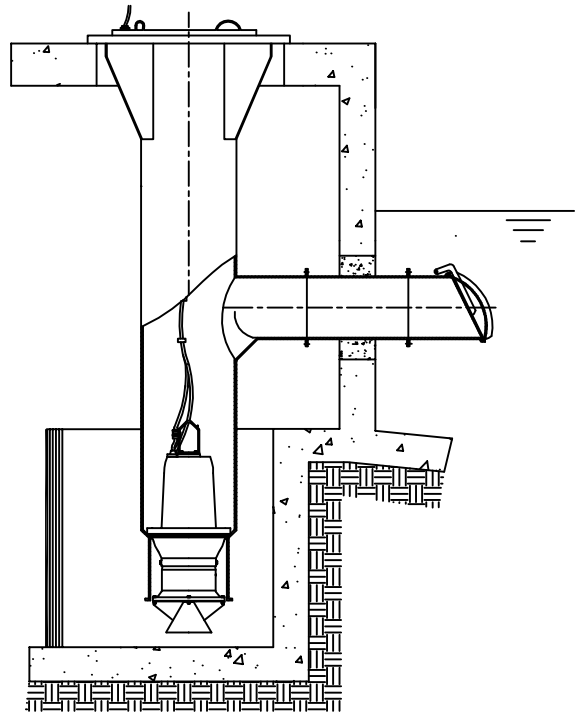
Submersible Axial Flow Pump



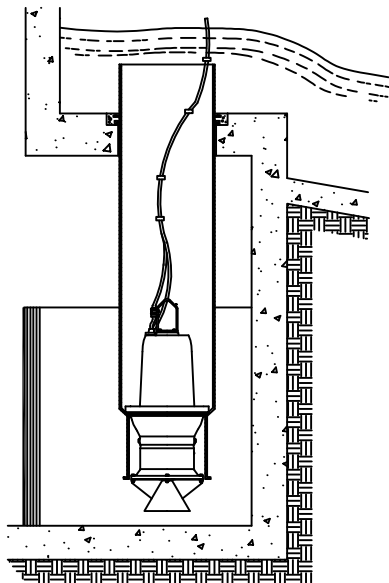
Typical Installation:



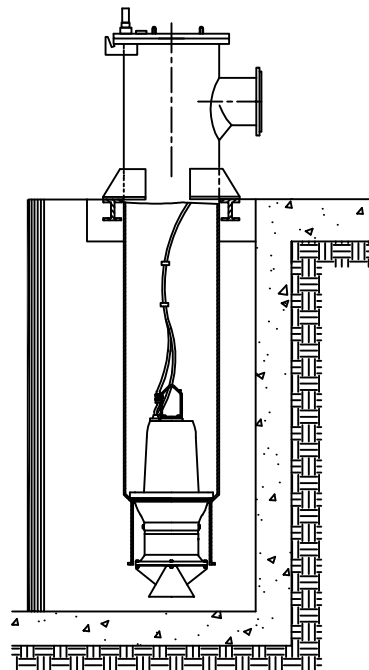
Type B



Type A



Type D



Type C

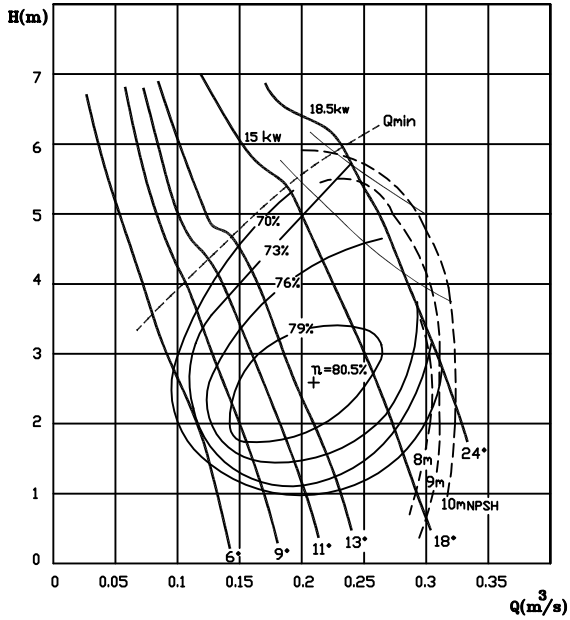


Submersible Axial Flow Pump



Type: P280B-4

1450 rpm

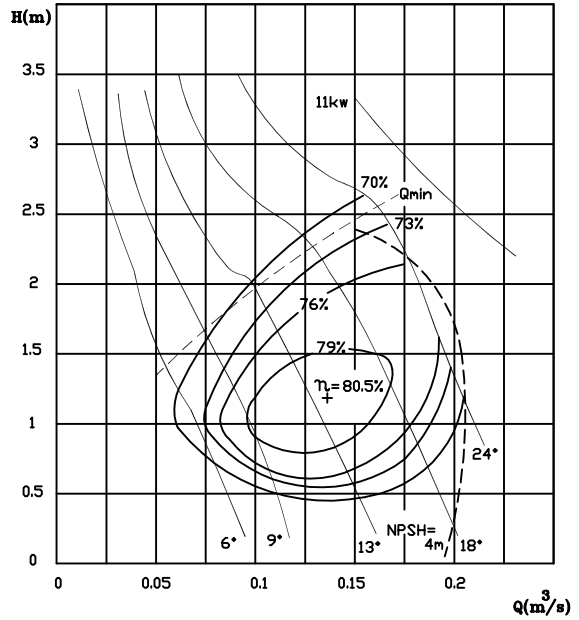


Submersible Axial Flow Pump



Type: P280B-6

970 rpm

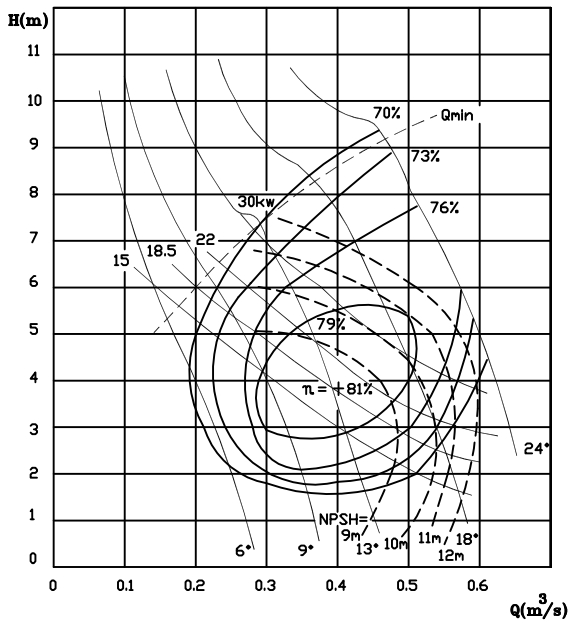


Submersible Axial Flow Pump



Type: P350B-4

1465 rpm

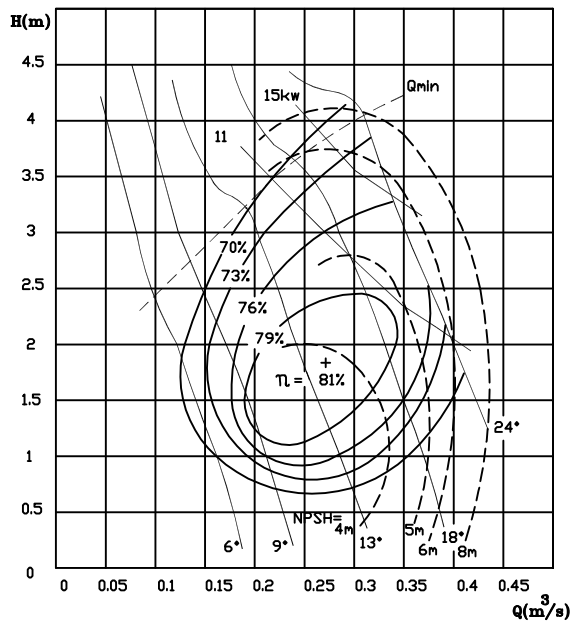


Submersible Axial Flow Pump



Type: P350B-6

970 rpm



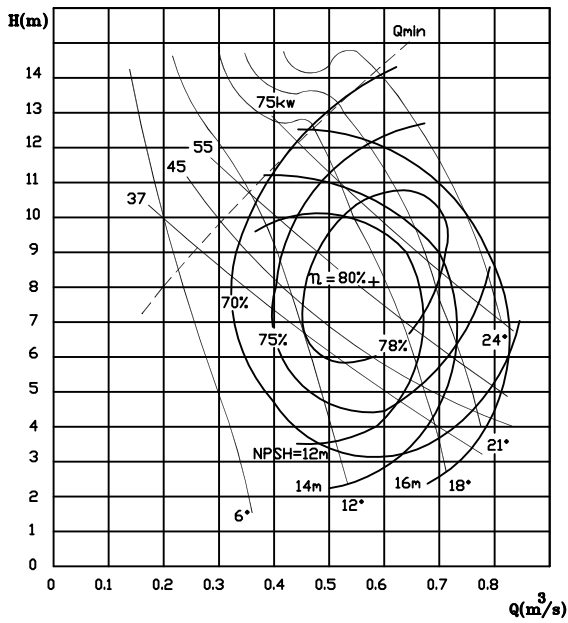


Submersible Axial Flow Pump



Type: P380B-4

1480 rpm

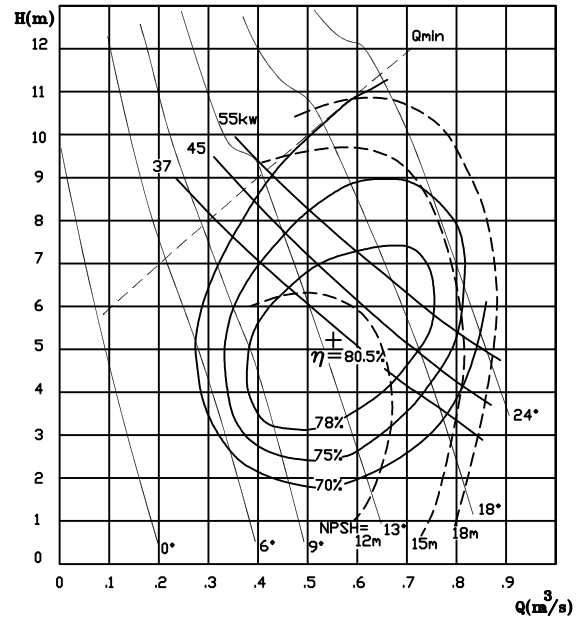


Submersible Axial Flow Pump



Type: P390B-4

1480 rpm

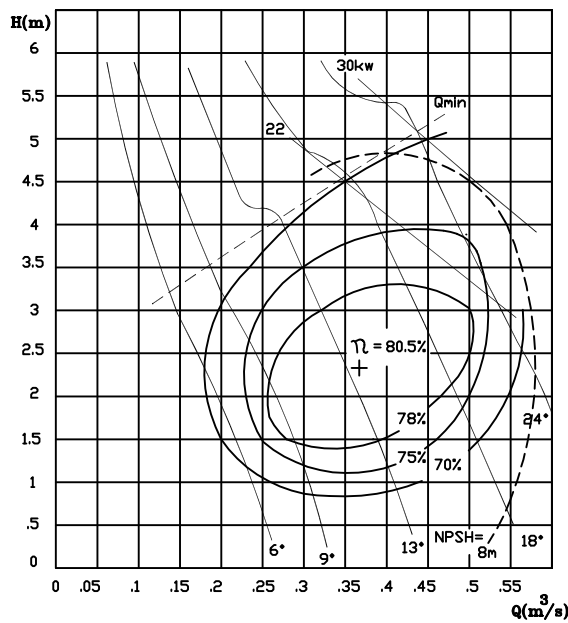


Submersible Axial Flow Pump



Type: P390B-6

985 rpm

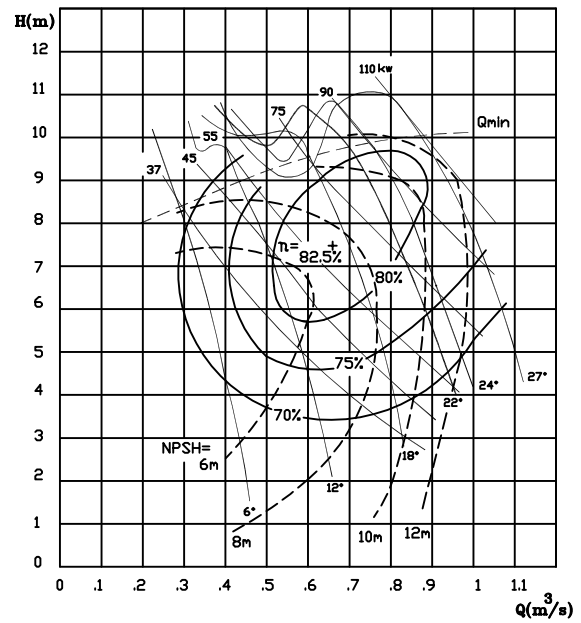


Submersible Axial Flow Pump



Type: P450B-6

960 rpm





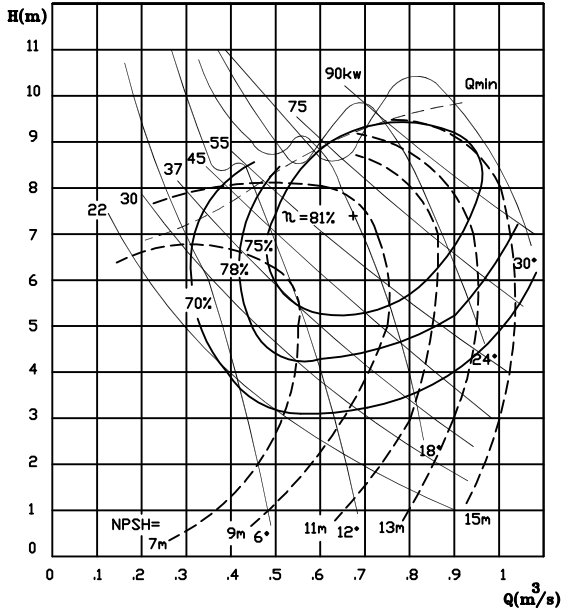
BERKEH

Submersible Axial Flow Pump



Type: P450C-6

985 rpm



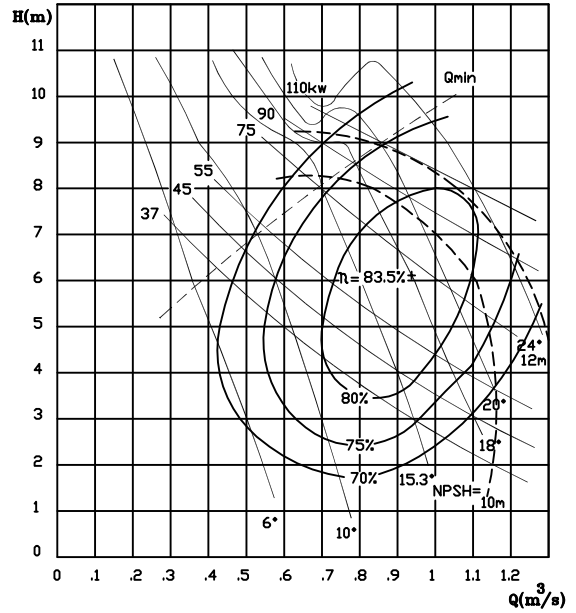
BERKEH

Submersible Axial Flow Pump



Type: P500A-6

985 rpm



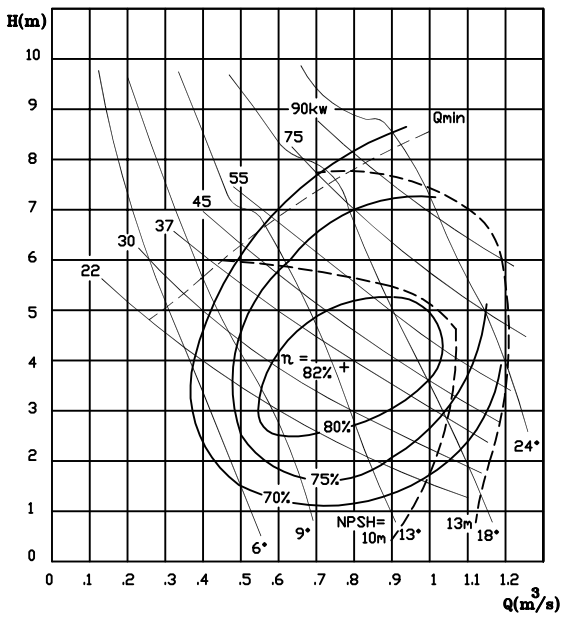
BERKEH

Submersible Axial Flow Pump



Type: P500B-6

985 rpm



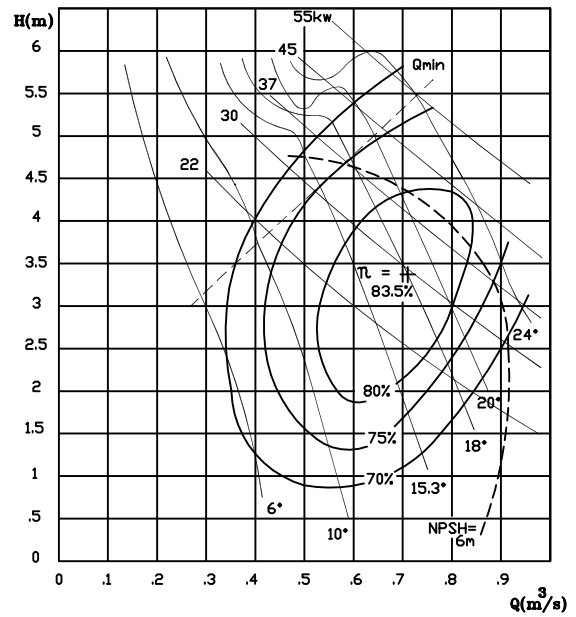
BERKEH

Submersible Axial Flow Pump



Type: P500A-8

740 rpm





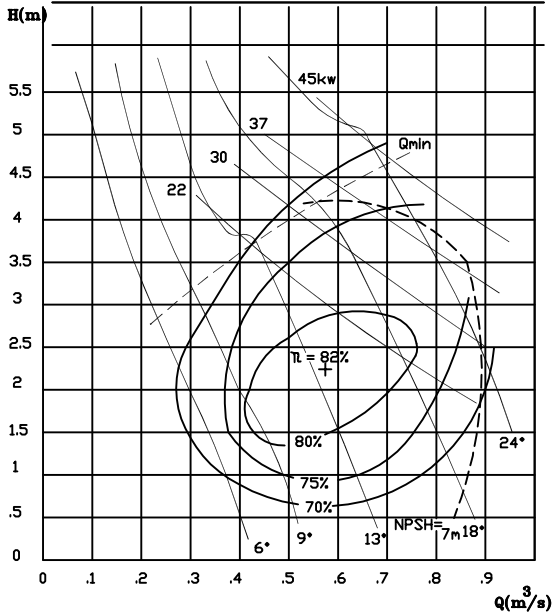
Submersible Axial Flow Pump



BERKEH

Type: P500B-8

740 rpm



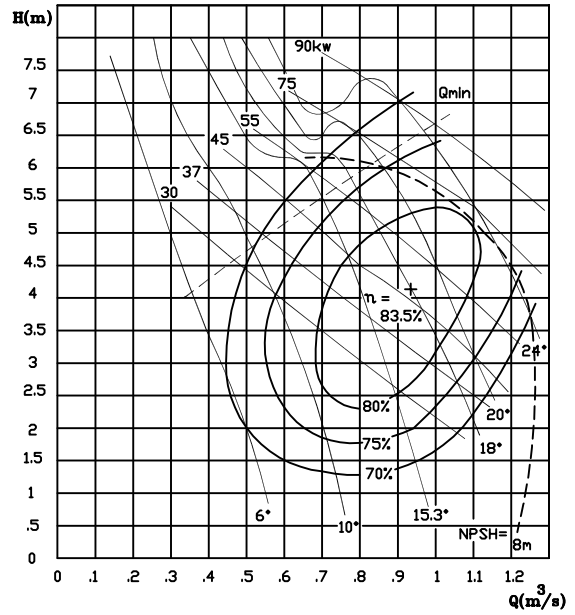
Submersible Axial Flow Pump



BERKEH

Type: P550A-8

740 rpm



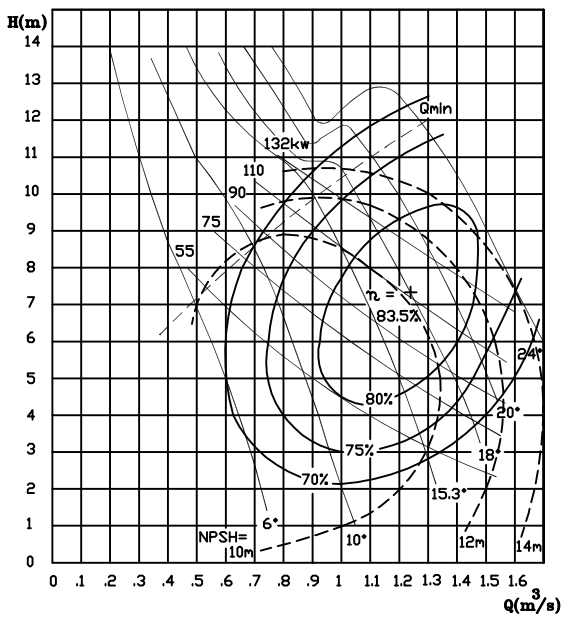
Submersible Axial Flow Pump



BERKEH

Type: P550A-6

985 rpm



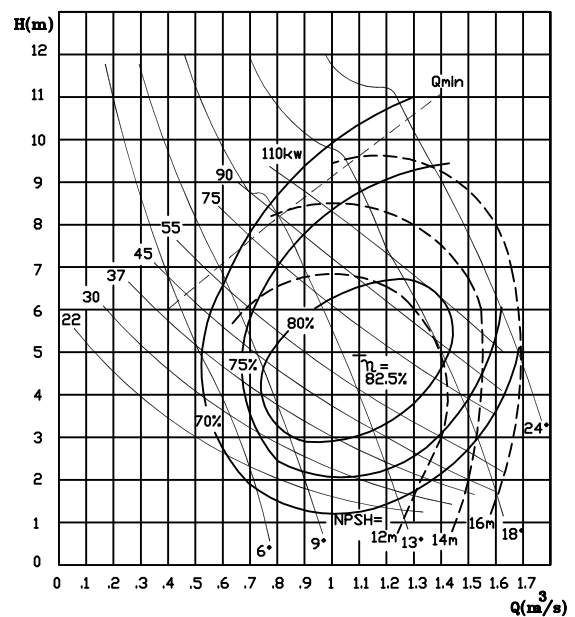
Submersible Axial Flow Pump



BERKEH

Type: P560B-6

985 rpm



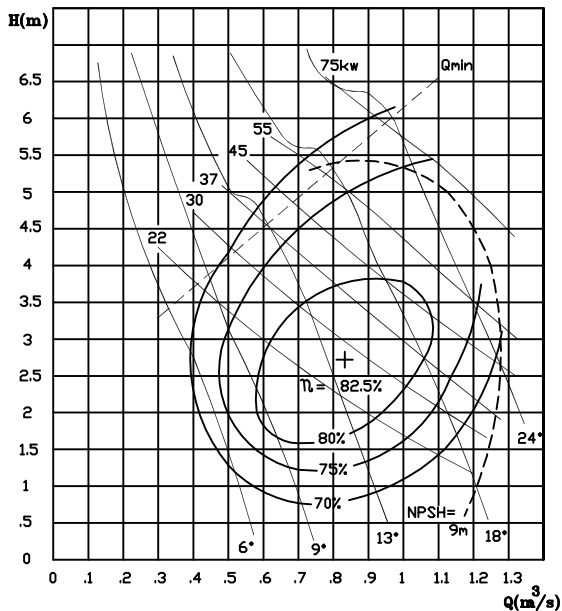


Submersible Axial Flow Pump



Type: P560B-8

740 rpm

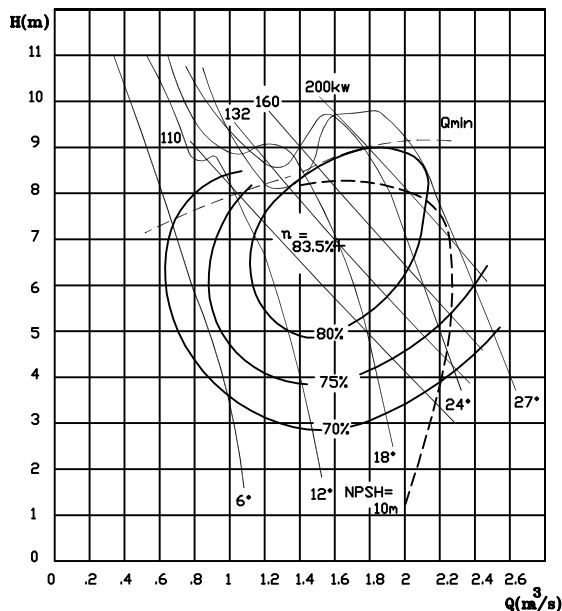


Submersible Axial Flow Pump



Type: P710B-10

590 rpm

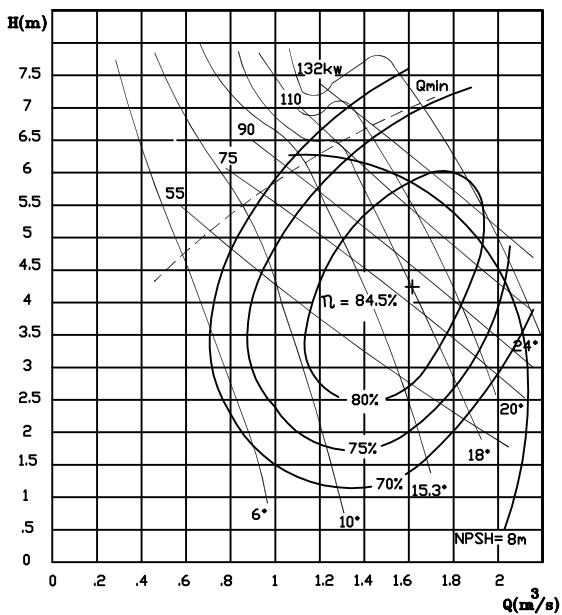


Submersible Axial Flow Pump



Type: P710D-10

590 rpm



Submersible Axial Flow Pump



Type: P950-10

536 rpm

